



Digital Title Plan - ML 426955

Survey Number ML 426955
Surveyor Reference 20091548/6473-6474
Surveyor Philip Dudley Norton
Survey Firm Ensurv (Blenheim)
Surveyor Declaration I Philip Dudley Norton, being a person entitled to practise as a licensed cadastral surveyor, certify that -
(a) The surveys to which this dataset relates are accurate, and were undertaken by me or under my direction in accordance with the Cadastral Survey Act 2002 and the Surveyor-General's Rules for Cadastral Survey 2002/2;
(b) This dataset is accurate, and has been created in accordance with that Act and those Rules.
Declared on 11 Mar 2010 01:19 PM.

Survey Details

Dataset Description Rangipo North No 6C and Rangipo North No 5C Blocks
Status Approved by Maori Land Court
Land District Wellington **Survey Class** Class III Cadastral Survey
Submitted Date 11/03/2010 **Survey Approval Date** 15/03/2010
Deposit Date

Territorial Authorities

Taupo District

Comprised In

CT DI 37/25

Created Parcels

Parcels	Parcel Intent	Area	CT Reference
Rangipo North No 6C Block Maori Land Plan 426955	Maori	2,757.1637 Ha	
Rangipo North No 5C Block Maori Land Plan 426955	Maori	1,301.9604 Ha	
Part Rangipo North No 6C Block	Fee Simple Title		
Part Rangipo North No 6C Block	Fee Simple Title		
Easement A Maori Land Plan 426955	Easement		
Part Rangipo North 6C Block	Maori		
Part Rangipo North 5C Block	Maori		
Easement B Maori Land Plan 426955	Easement		
Rangipo North No 6C Block	Maori		
Total Area		<u>4,059.1241 Ha</u>	

Schedule / Memorandum

Land Registration District

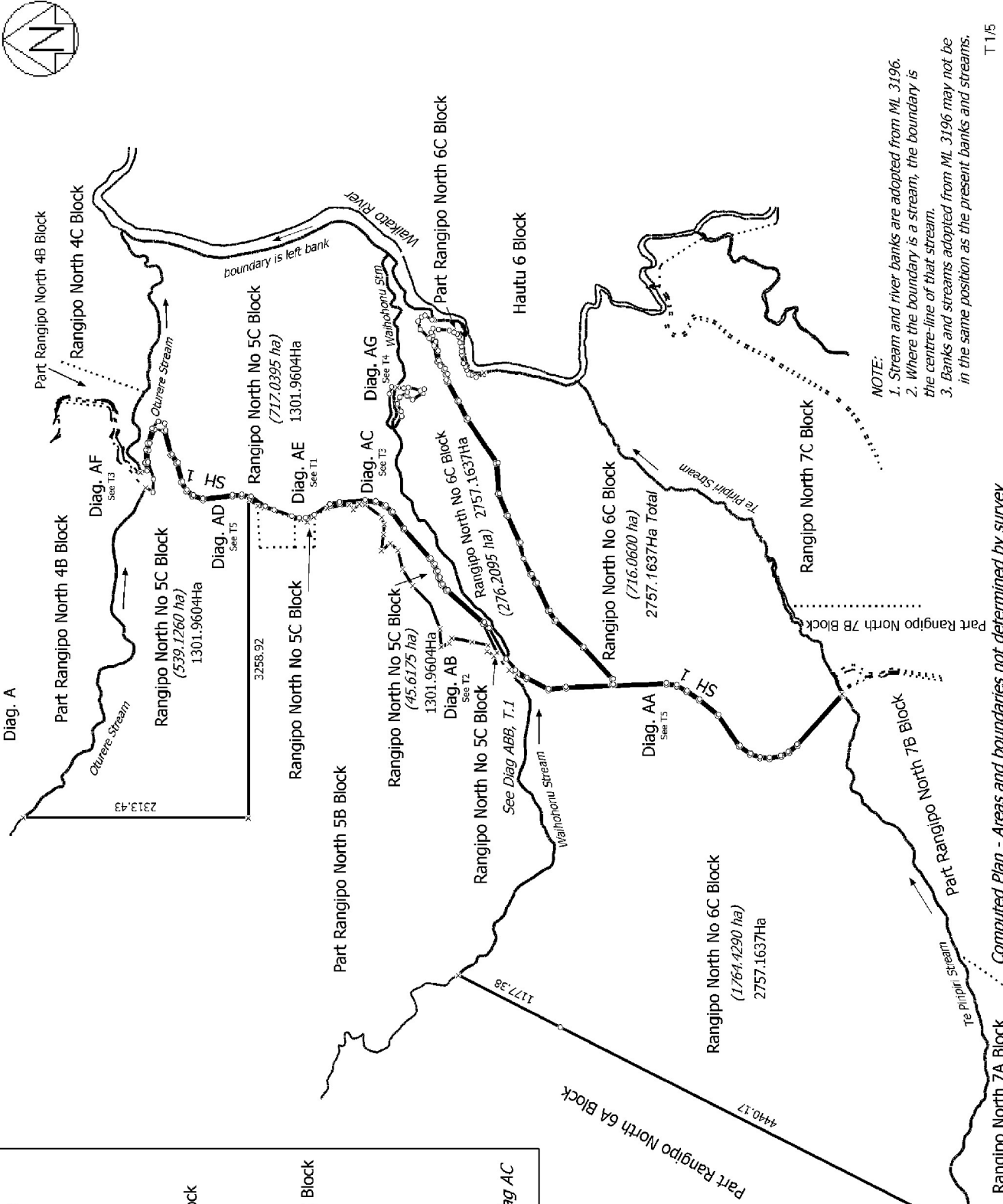
Wellington

Plan Number

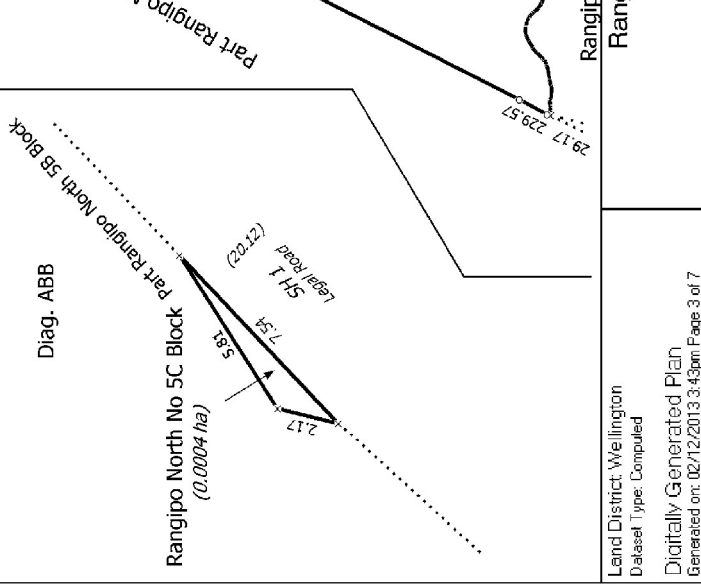
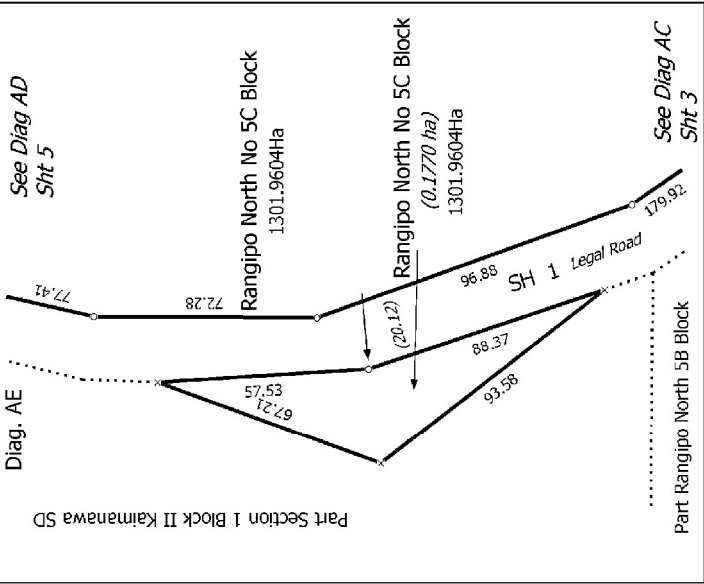
ML 426955

Schedule of Existing Easements			
Purpose	Shown	Servient Tenement	Document
Right of Way	A	Rangipo North 6C	B294899.1
Right of Way	B	Rangipo North 6C	B294899.1

Note: See NZ Gazettes 1991 page 12 and 1991 Page 2243



NOTE:
 1. Stream and river banks are adopted from ML 3196.
 2. Where the boundary is a stream, the boundary is the centre-line of that stream.
 3. Banks and streams adopted from ML 3196 may not be in the same position as the present banks and streams.



Digital Title Plan
 ML 426955
 Approved on: 15/03/2010

Surveyor: Philip Dudley Norton
 Firm: Ensury (Eilanheim)

Computed Plan - Areas and boundaries not determined by survey
 Rangipo North No 6C and Rangipo North No 5C Blocks

Land District: Wellington
 Dataset Type: Computed
 Digitally Generated Plan
 Generated on: 02/12/2013 3:43pm Page 3 of 7



See Diag AG Sht 4

NOTE: Streams and banks adopted from ML 3196 may not be in the same position as the present streams.

Diag. AB

See Diag AC Sht 3

Rangipo North No 5C Block

1301.9604Ha

Part Rangipo North 5B Block

Part Rangipo North No 5C Block

1301.9604Ha

Rangipo North No 6C Block

(276.2095 ha)

Part Rangipo North No 6C Block

See Diag AG Sht 4

Diag. ABB

See T1

Waiwhaitiri Strm

Waiwhaitiri Strm

Rangipo North No 5C Block

1301.9604Ha

See T1

See T1

See T1

See T1

See T1

See T1

See T1

See T1

See T1

See T1

See T1

See T1

See T1

See T1

See T1

See T1

See T1

See T1

See T1

See T1

See T1

See T1

See T1

See T1

See T1

See T1

See T1

See T1

See T1

See T1

See T1

See T1

See T1

See T1

See T1

See T1

See T1

See T1

See T1

See T1

See T1

Diag. ABA

Rangipo North No 6C Block

Rangipo North No 6C Block

Part Rangipo North No 6C Block

See T2

See T2

See T2

See T2

See T2

See T2

See T2

See T2

See T2

See T2

See T2

See T2

See T2

See T2

See T2

See T2

See T2

See T2

See T2

See T2

See T2

See T2

See T2

See T2

See T2

See T2

See T2

See T2

See T2

See T2

See T2

Computed Plan - Areas and boundaries not determined by survey

Rangipo North No 6C and Rangipo North No 5C Blocks

Surveyor: Philip Dudley Norton
Firm: Ensurv (Eilatheim)

Digital Title Plan
ML 426955

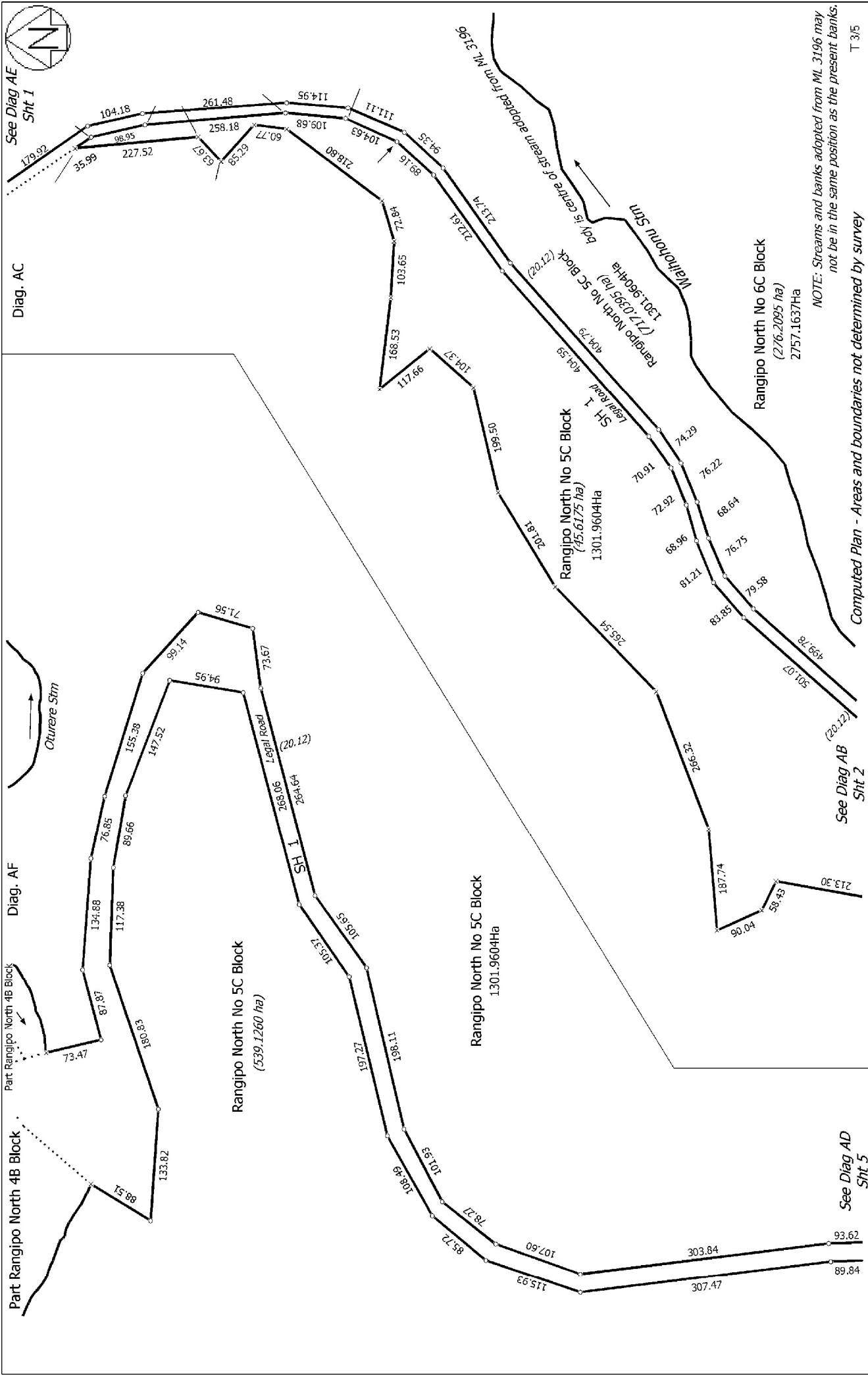
Approved on: 15/03/2010

Land District: Wellington
Dataset Type: Computed

Digitally Generated Plan

Generated on: 02/12/2013 3:43pm Page 4 of 7

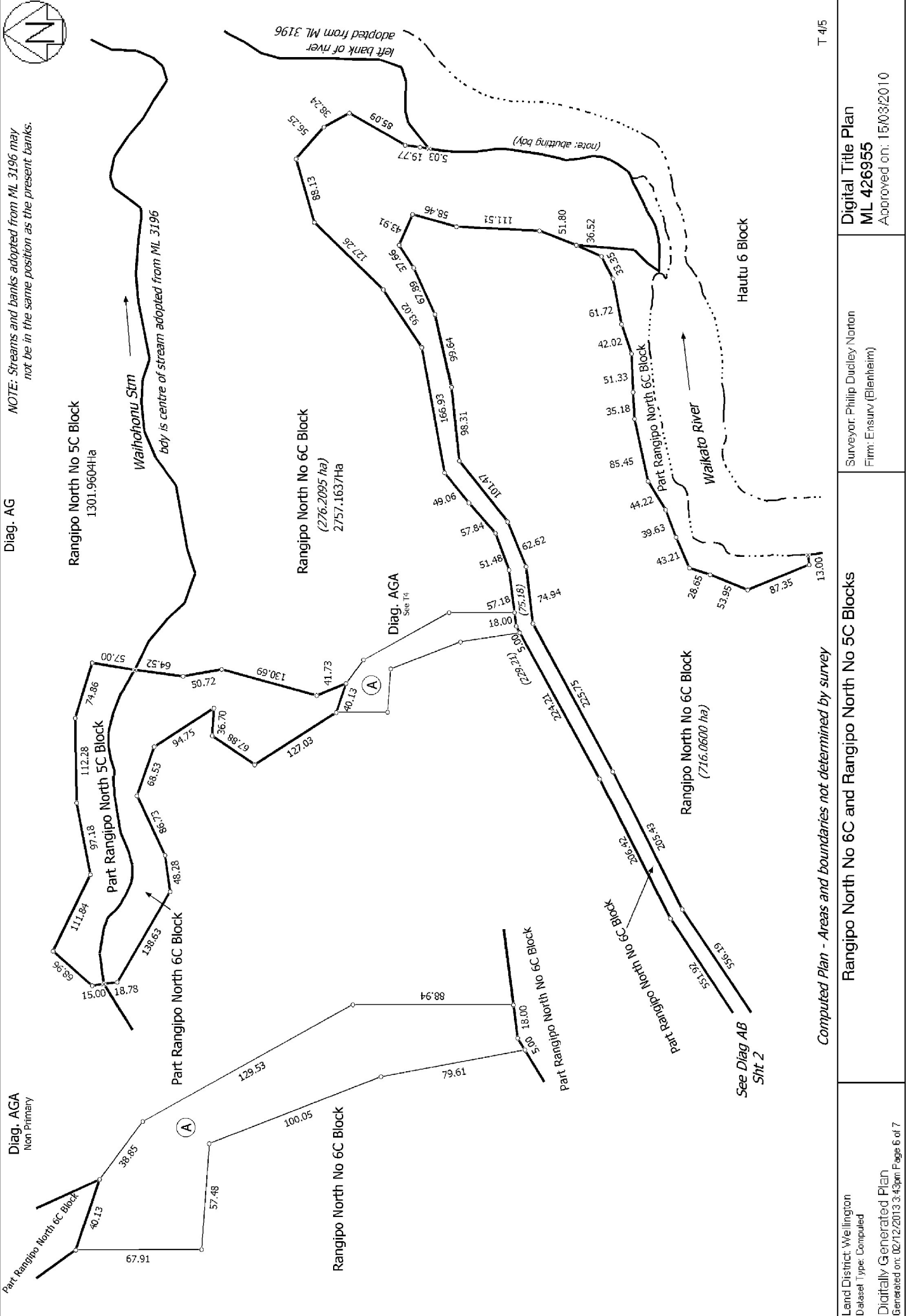
T 2/5



Land District: Wellington Dataset Type: Computed Digitally Generated Plan Generated on: 02/12/2013 3:45pm Page 5 of 7	Rangipo North No 5C and Rangipo North No 6C Blocks Surveyor: Philip Dudley Norton Firm: Ensurv (Eilanheim)	Digital Title Plan ML 426955 Approved on: 15/03/2010 Computed Plan - Areas and boundaries not determined by survey T 3/5
--	---	---



Diag. AG
NOTE: Streams and banks adopted from ML 3196 may not be in the same position as the present banks.

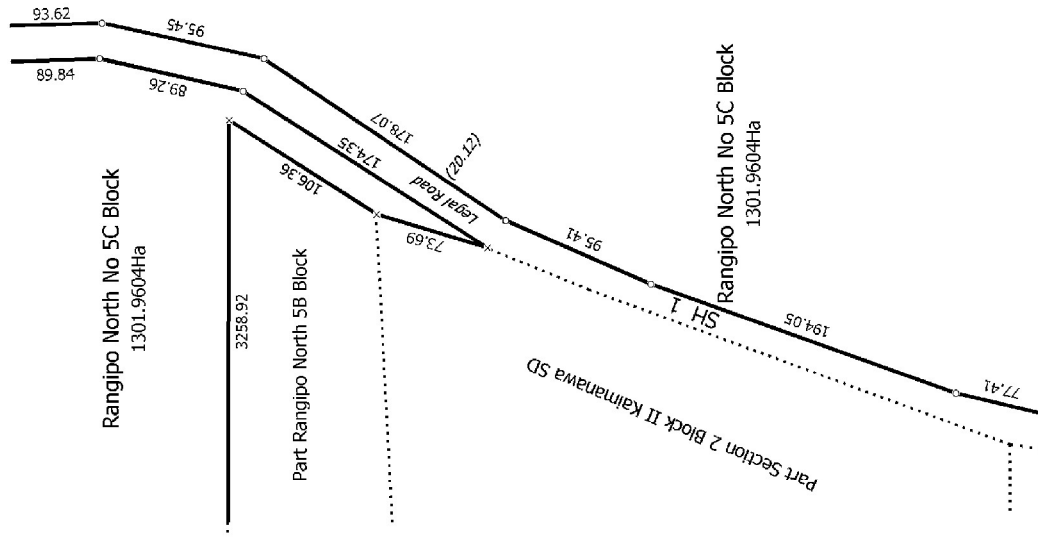
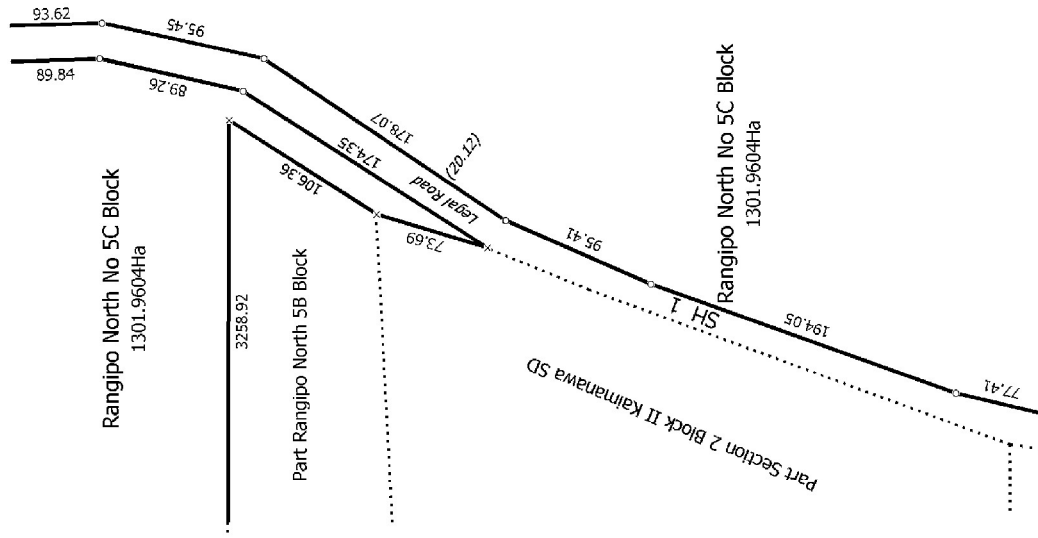


Diag. AA



Diag. AD

See Diag AF
Sht 3



See Diag AE
Sht 1

NOTE: Streams and banks adopted from ML 3196 may not be in the same position as the present banks.

T 5/5

Computed Plan - Areas and boundaries not determined by survey

Rangipo North No 6C and Rangipo North No 5C Blocks

Surveyor: Philip Dudley Norton
Firm: Ensurv (Eilanheim)

Digital Title Plan
ML 426955
Approved on: 15/03/2010